

# TOPS



*Spirit wear may be worn on the last day of the week with dress code bottoms.*

only official school logo may be on tops

must have collars\*

must have sleeves

must be tucked in

## SWEATSHIRTS, SWEATERS & VESTS

same solid colors with dress code shirt underneath

## COLORS TOPS

*(solid colors only)*

navy blue

powder blue

hunter green

red

white

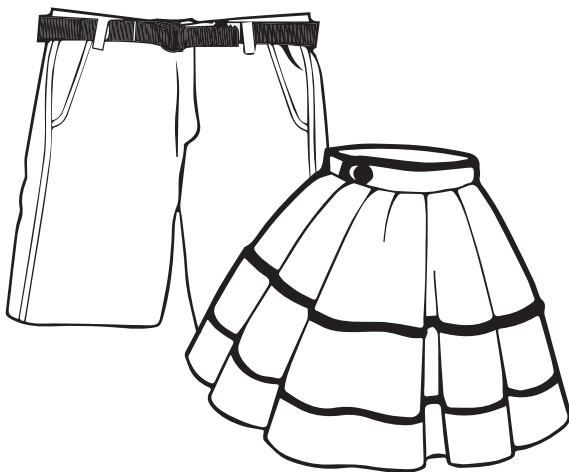
## BOTTOMS

solid navy blue

solid khaki

thin, uniform plaid

# FRONTIER ACADEMY ELEMENTARY DRESS CODE



no shorter than a credit card/ID length above the top of the knee

belts are optional

belts worn must be solid color or plaid only

## BOTTOMS & DRESSES

## SOCKS

must be worn

navy blue

hunter green

red

white

brown

tan

black

## SHOES

closed toe only  
no blinking lights

no "cros"

no heels

\*short, long sleeve, or 3/4" sleeve - polo's, henley's, oxford's, turtlenecks, mock turtlenecks, and Peter Pan collars all permitted. Buttons must match the shirt or be a neutral color.